

# New York Resident Exit Survey, 1998 - 2019

---

Presented by: David Armstrong, PhD

Project Director

Center for Health Workforce Studies

School of Public Health | University at Albany, SUNY

[dparmstrong@albany.edu](mailto:dparmstrong@albany.edu)

May 3, 2019

AAMC Health Workforce Research Conference

Alexandria, VA



# Center for Health Workforce Studies

---

- The Center for Health Workforce Studies (CHWS) —established in 1996— is an academic research center based at the School of Public Health at the University at Albany, State University of New York (SUNY)
- Mission: To provide timely, accurate information and conduct policy-relevant research about the health workforce
- Goal: To assist health, professional, and educational organizations, policy makers, planners, and other stakeholders to understand issues related to the supply, demand, distribution, and the use of health workers

# Overview of New York Resident Exit Survey

---

- New York trains the largest number of physicians in the nation
  - Approximately 1,100 programs and 16,000 residents
- Conducted annually since 1998 (except for 2004 and 2006)
- A survey of all residents and fellows completing training in New York (approximately 5,000 annually)
- Substantial support and assistance from teaching hospitals throughout the state

# Exit Survey Instrument

---

- 32 questions on a variety of topics including:
  - Demographic characteristics
  - Education debt
  - Job market experiences
  - Upcoming practice characteristics
  - Expected income
- Paper and online version of survey

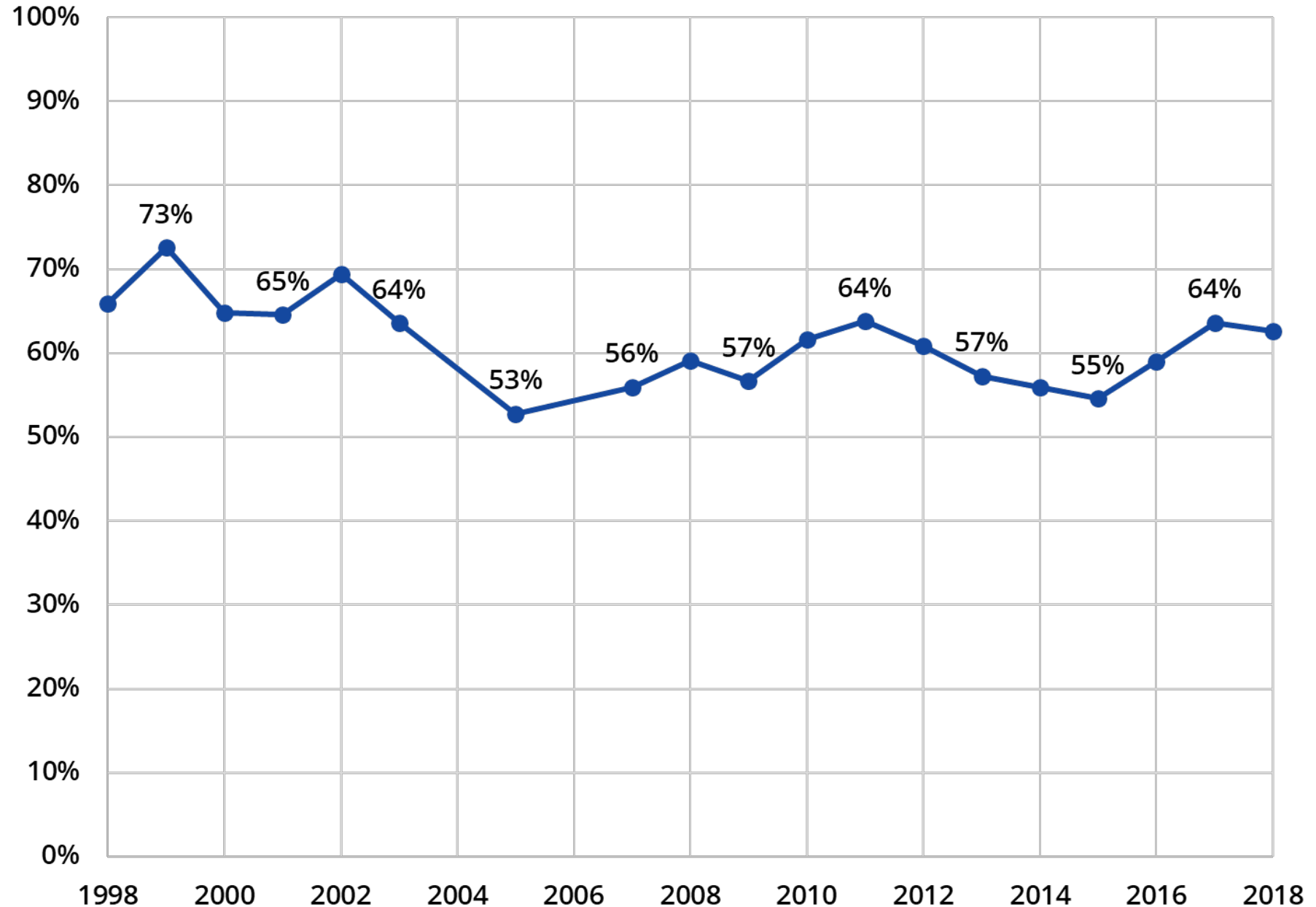
# Exit Survey Administration

---

- 59 primary contacts located at teaching hospitals through out the state
  - GME Directors and Administrators
  - Program Directors
  - DIOs
- Key Dates (year long process)
  - February: Ask primary contacts to update program information
  - April: Mail surveys to primary contacts
  - September: Finish collecting surveys
  - October: Begin processing data and preparing reports

# Response Rate by Year

- Since 1998, 57,634 out of 94,338 physicians have completed the survey
- Overall Response Rate: 61%



# Annual Reports and Outreach

---

- [\*2017 New York Residency Training Outcomes: A Summary of Responses to the 2017 New York Resident Exit Survey\*](#)
- [\*Trends in Demand for New Physicians, 2013-2017: A Summary of Demand Indicators for 34 Physician Specialties\*](#)
- Briefs: [\*Gender Pay Gaps Widen for Newly Trained Physicians\*](#)
- NY GME Data Dashboard

## New York GME Data Dashboard

Visualizing Results from the NY Resident Exit Survey

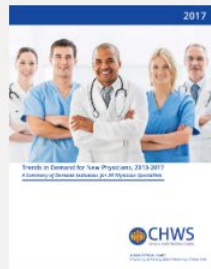
### Latest Updates

**New Data Available!**  
March 22 2019

The 2018 NY Resident Exit Survey Data is now available! You can access the new information in the Download section.

[Learn More](#)

### Read Our Most Recent Report



**Trends in Demand for New Physicians, 2013-2017 Specialties**  
Liu Y, Armstrong DP. Trends in Demand for New Physician Specialties. Rensselaer, NY: Center for Health Workforce Studies; November 2018.

[Download](#)

#### Demographics and Citizenship Status

#### Location of Education and Debt

#### Primary Activity after Completing Current Training Program

#### Job Market Experiences

#### Income

#### Trends

## Springfield General Hospital

Select Data

Your Institution and All Institutions

Specialty

All Specialties

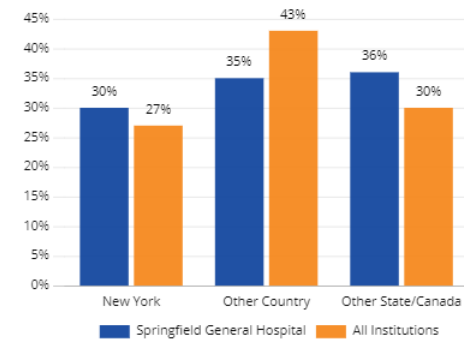
Year

2016

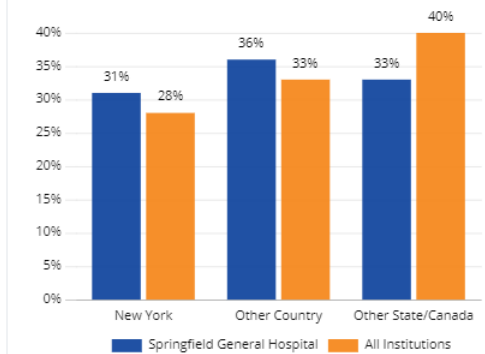
Type of Data

Percentages

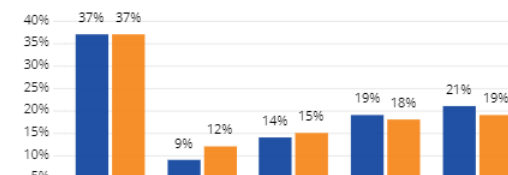
### Medical School Location



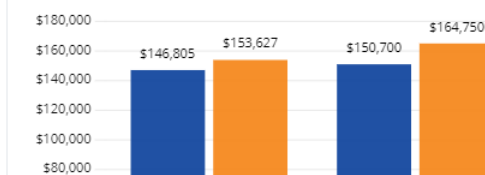
### High School Location



### Education Debt (Dollars)



### Mean and Median Education Debt





# Contact Information

---

- For more information, please email me at: [dparmstrong@albany.edu](mailto:dparmstrong@albany.edu)
- Visit us at:



@CHWS\_NY



@Centerforhealthworkforcestudies



/company/center-for-health-workforce-studies