

Changes in Practice Patterns of Newly Trained Primary Care Physicians

**David P. Armstrong, PhD
Gaetano J. Forte**

**Center for Health Workforce Studies
School of Public Health, University at Albany
<http://chws.albany.edu>**

May 3, 2012

The Center for Health Workforce Studies

- Based at the School of Public Health, University at Albany
- Not-for-profit research center
- Our mission is to provide timely, accurate data, and conduct policy-relevant research about the health workforce.
- Our goal is to inform health, professional, and education organizations; policy makers and planners; other stakeholders, and the public.

GME in the U.S. and New York

- In the U.S., more than 8,900 programs with over 111,000 residents
 - 36 physicians in training per 100,000 population
- In New York, more than 1,100 programs with over 15,700 physicians in training
 - 80 physicians in training per 100,000 population

The New York Resident Exit Survey

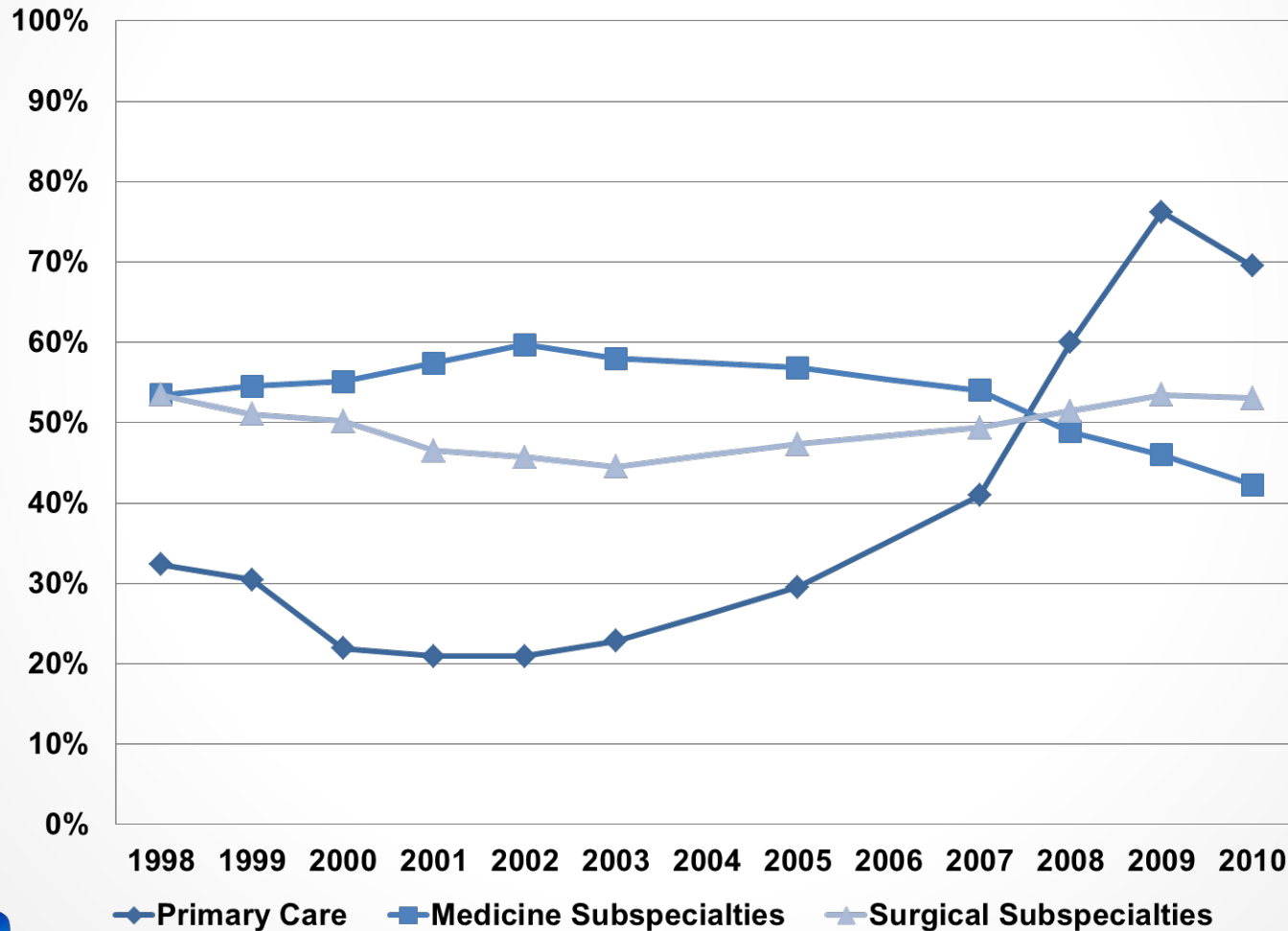
- A survey of all residents and fellows completing training in New York (approximately 5,000 annually)
- Conducted annually since 1998 (except for 2004 and 2006)
- Substantial support and assistance from GME directors and program directors
- Average annual response rate of 62%

Estimating Relative Demand by Specialty

- Difficulty finding a satisfactory practice position
- Changing plans due to limited practice opportunities
- Number of job offers
- Assessment of regional and national job markets
- Change in starting income over time

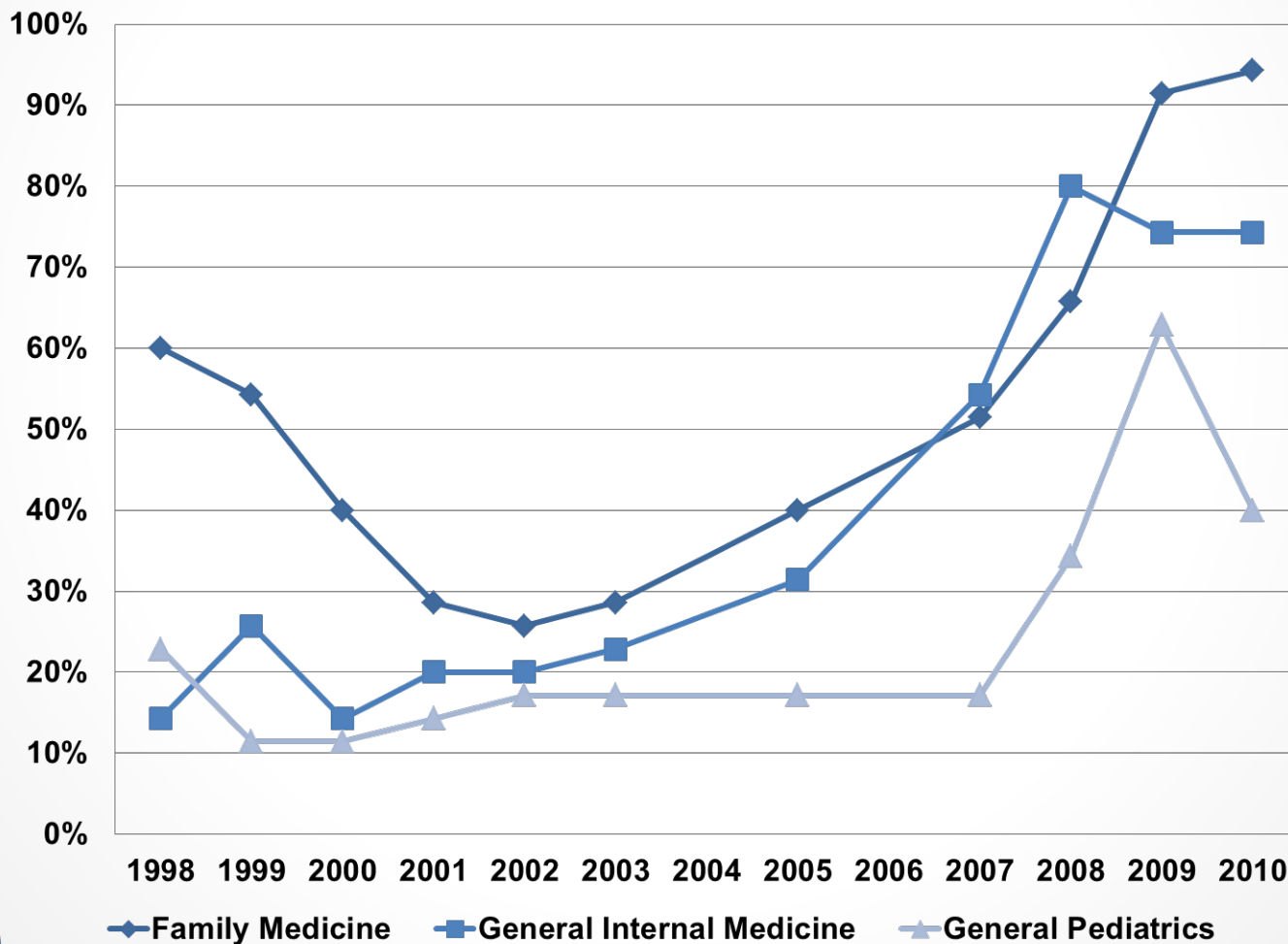
Demand for Primary Care Physicians has Surpassed Demand for Specialists

Relative Demand for Newly Trained Physicians (higher is better)



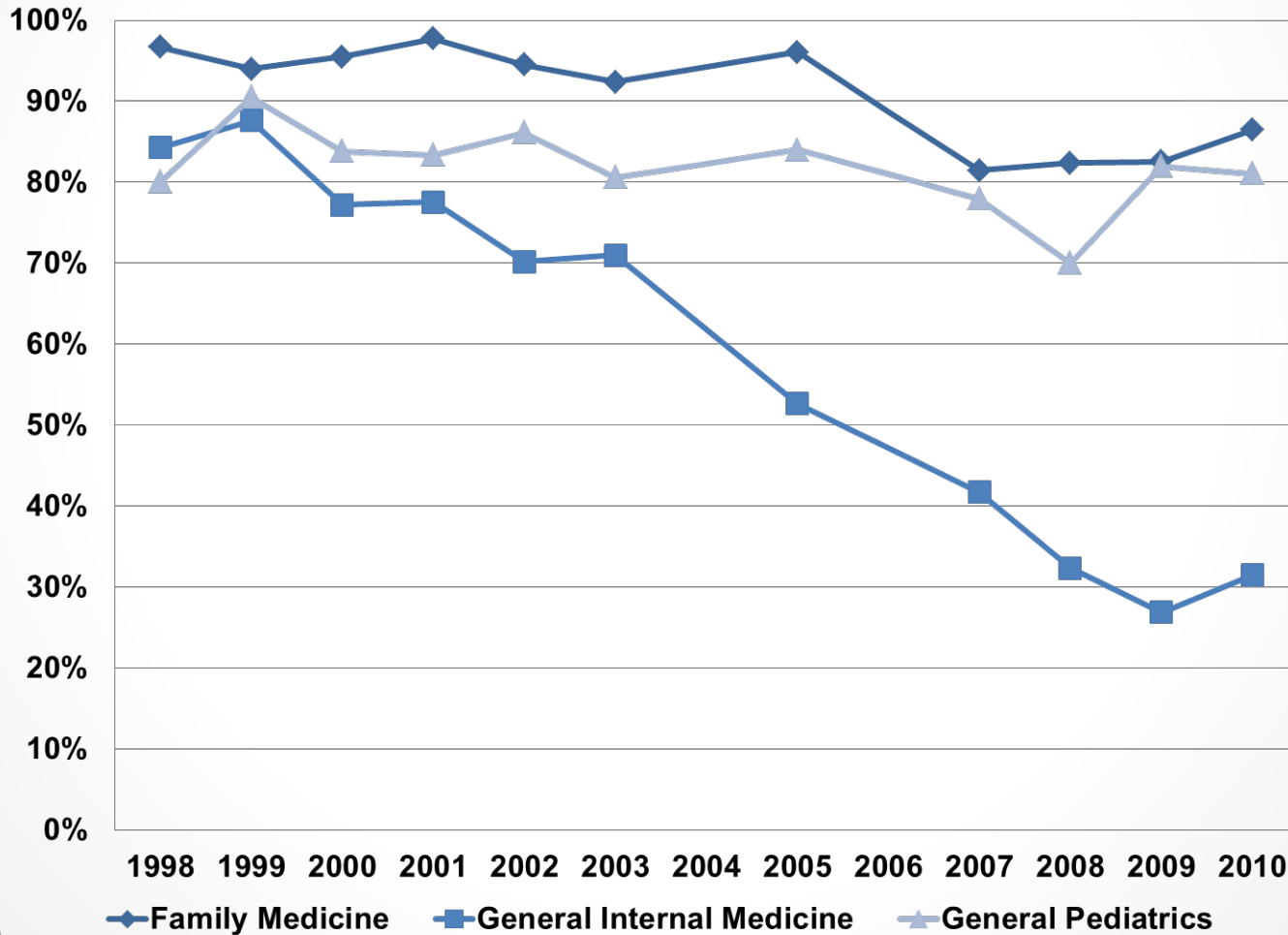
Demand for General IM and Family Medicine Physicians has Increased the Most

Relative Demand for Newly Trained Physicians (higher is better)



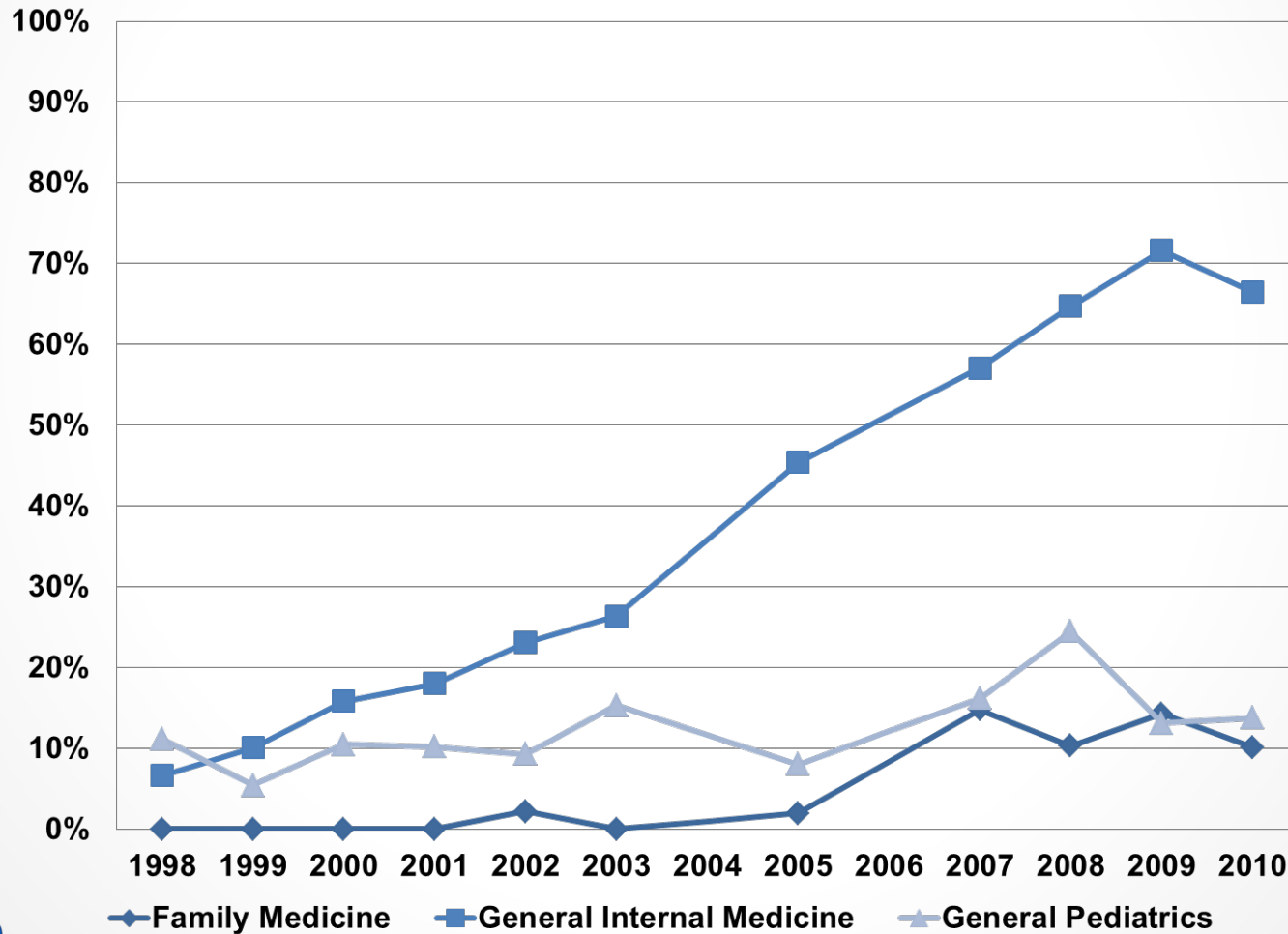
Fewer General IM Physicians are entering Community-based Practices

Percent of Newly Trained Physicians Practicing in Community-based Settings



More than half of General IM Physicians Choose to Practice in Hospital Inpatient Settings

Percent of Newly Trained Physicians Practicing in Hospital Inpatient Settings



General IM Physicians in Community-based Settings have different Characteristics than General IM Physicians in Hospital Inpatient Settings

Characteristics of Newly Trained General IM Physicians (2008-2010)

	Community-based General IM	Hospital Inpatient General IM
Female*	48%	30%
Underrepresented minority	20%	17%
Foreign-born international medical graduate	64%	69%
Staying in NY to practice*	40%	23%
Expect to remain at principal practice for 5+ years*	45%	27%
Expected weekly patient care hours	43	46
Expected total weekly hours*	57	63
Average annual starting income*	\$159,332	\$183,070

* $p < .05$ for independent samples t-test

Source: New York Resident Exit Survey (2008-2010)

General IM Physicians in Community-based Settings Share Characteristics with Family Medicine Physicians

Characteristics of Newly Trained Physicians (2008-2010)

	Community-based General IM	Family Medicine
Female	48%	51%
Underrepresented minority	20%	23%
Foreign-born international medical graduate*	64%	41%
Staying in NY to practice*	40%	52%
Expect to remain at principal practice for 5+ years	45%	46%
Expected weekly patient care hours	43	43
Expected total weekly hours	57	56
Average annual starting income	\$159,332	\$159,144

* $p < .05$ for independent samples t-test

Source: New York Resident Exit Survey (2008-2010)

Hospital Inpatient General IM Physicians Differ from Medicine Subspecialty Physicians

Characteristics of Newly Trained Physicians (2008-2010)

	Hospital Inpatient General IM	Medicine Subspecialties
Female*	30%	37%
Underrepresented minority*	17%	11%
Foreign-born international medical graduate*	69%	37%
Staying in NY to practice*	23%	45%
Expect to remain at principal practice for 5+ years*	27%	66%
Expected weekly patient care hours*	46	44
Expected total weekly hours	63	61
Average annual starting income*	\$183,070	\$209,443

* $p < .05$ for independent samples t-test

Source: New York Resident Exit Survey (2008-2010)

In Conclusion...

- Demand for newly trained primary care physicians is increasing and has surpassed demand for specialists
- Most newly trained general IM physicians are not working in community-based settings
- Community-based general IM physicians have different characteristics than general IM physicians practicing in hospital inpatient settings